

Figure 1. Number of reporting largemouth bass tournaments at Patoka Lake.

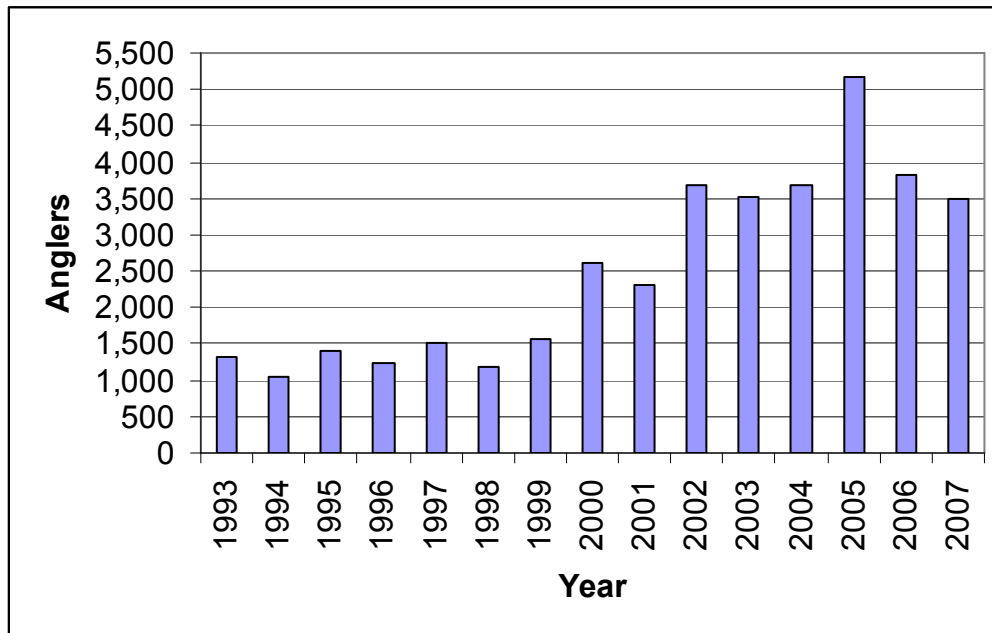


Figure 2. Number of anglers in reporting largemouth bass tournaments at Patoka Lake.

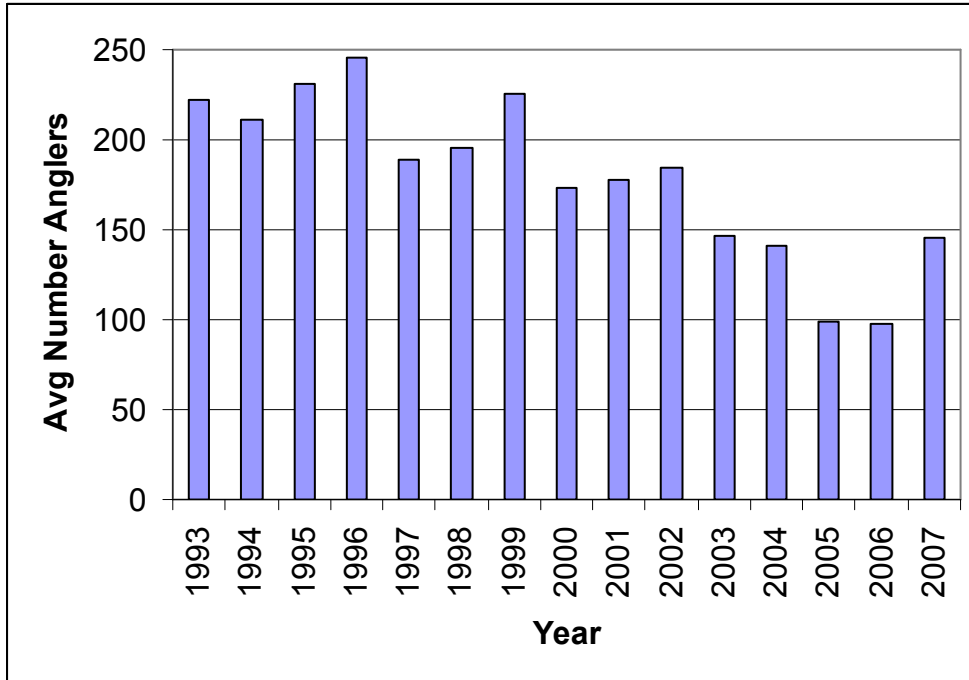


Figure 3. Average number of anglers per reporting bass tournament at Patoka Lake.

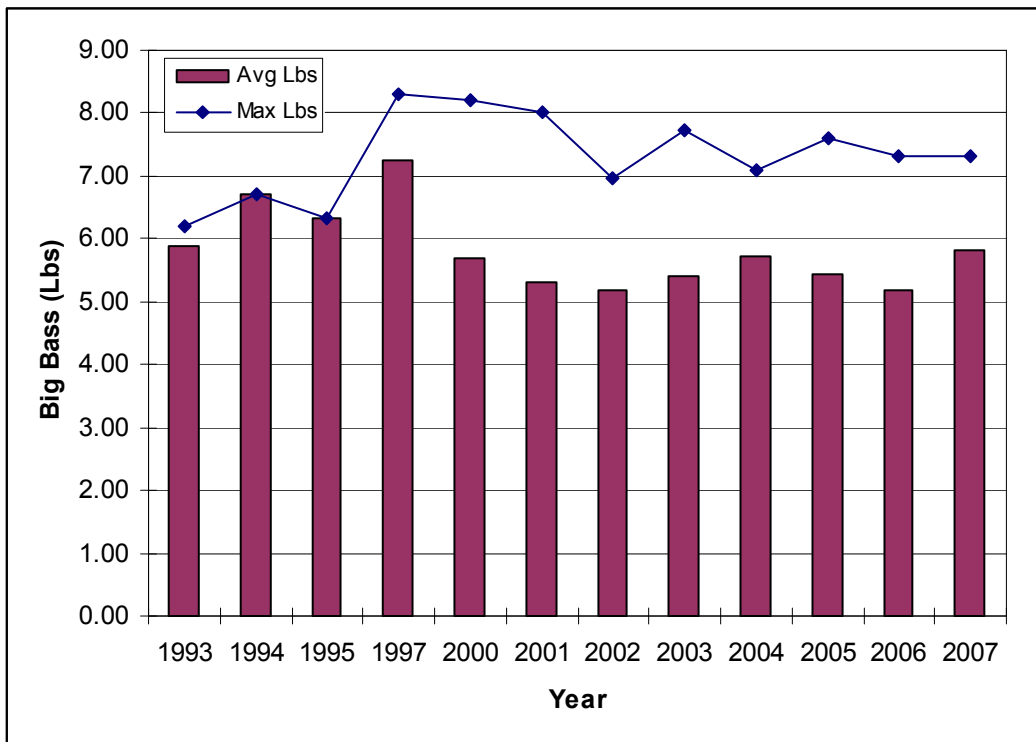


Figure 4. Maximum and average weight (pounds) of the big bass at Patoka Lake bass tournaments.

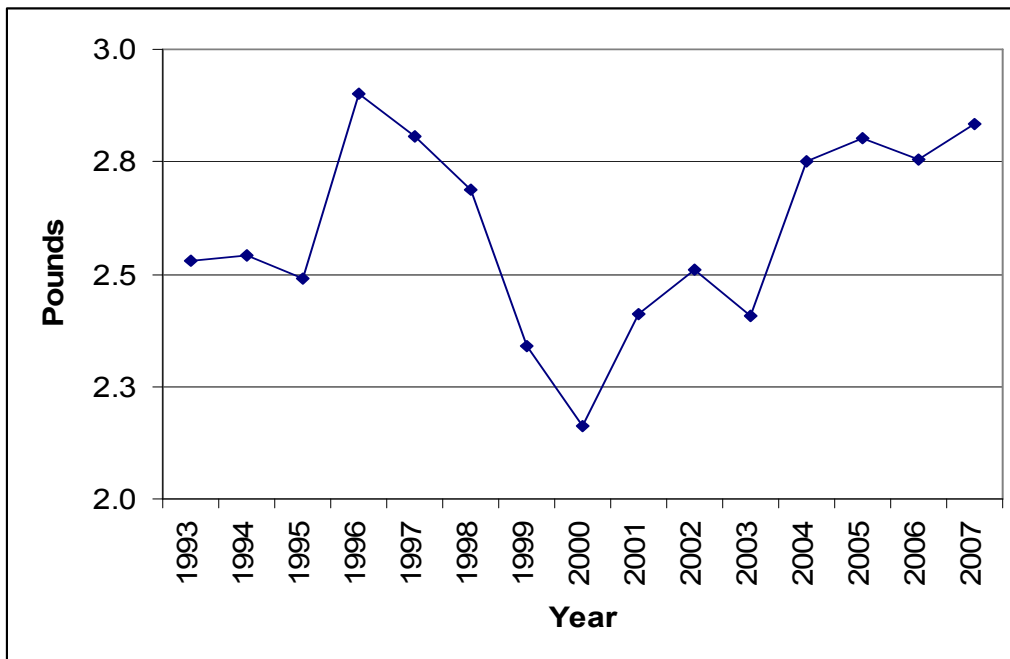


Figure 5. Average weight (pounds) of a weighed-in largemouth bass at Patoka Lake bass tournaments.

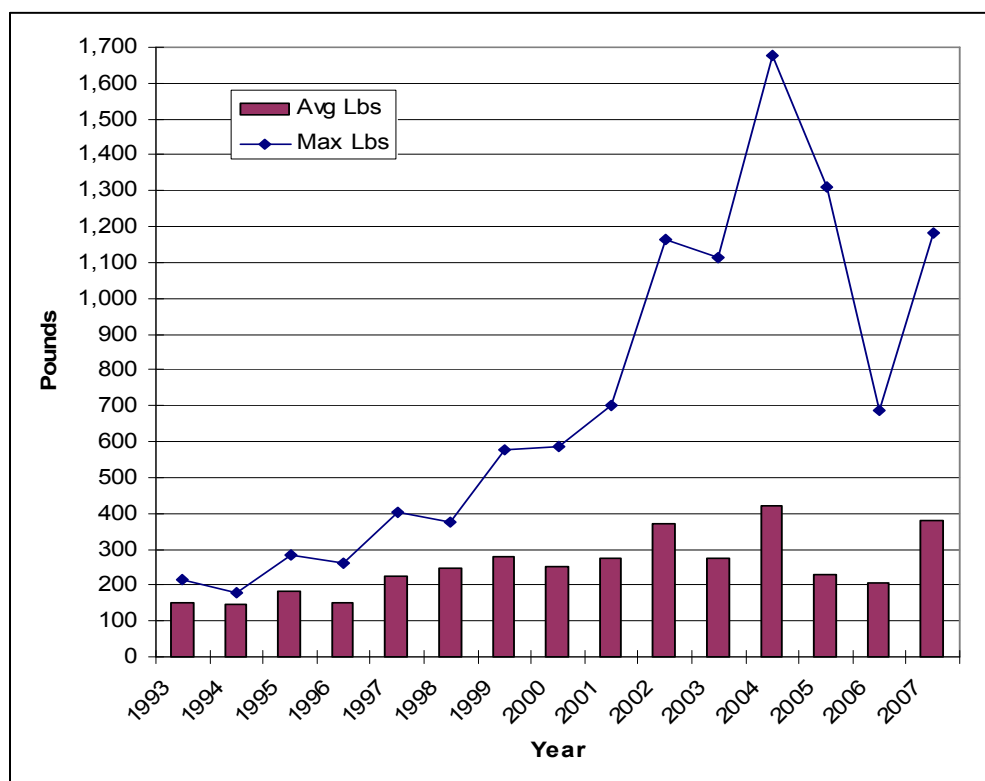


Figure 6. Average and maximum weight of the total pounds of largemouth bass weighed-in at Patoka Lake tournaments.

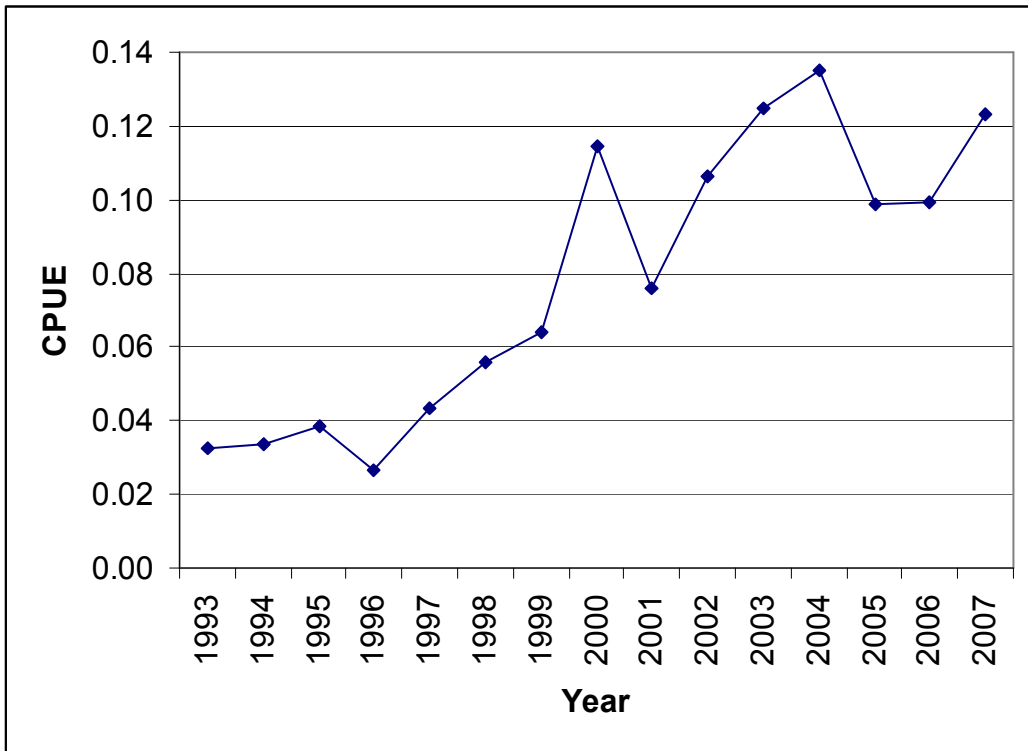


Figure 7. CPUE (#/h) of legal largemouth bass weighed-in at Patoka Lake bass tournaments.

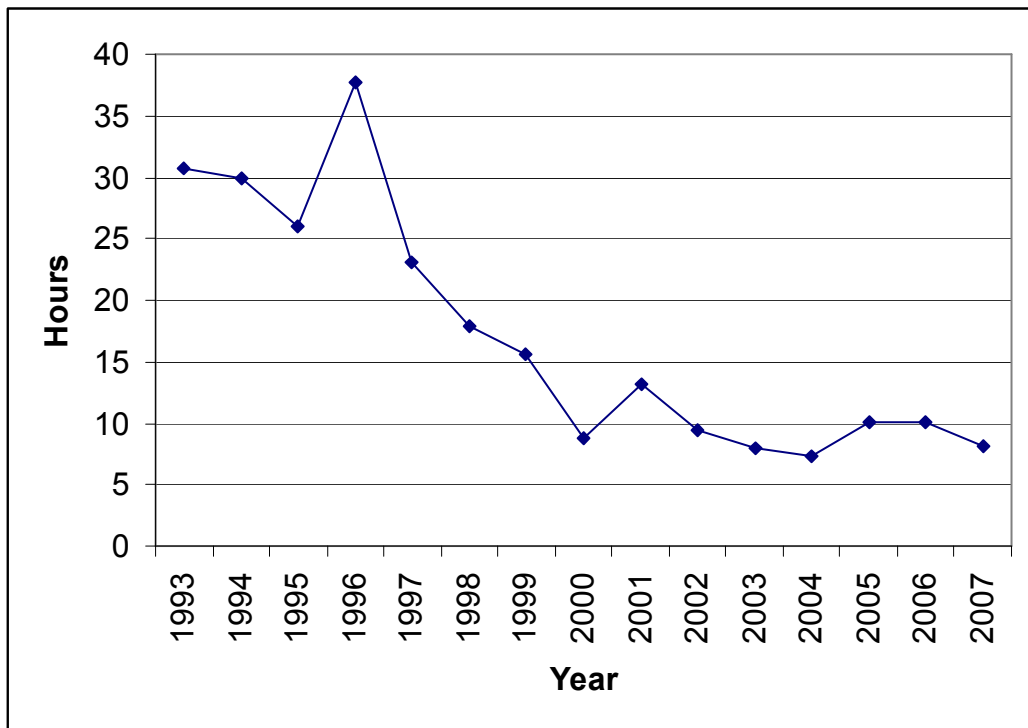


Figure 8. Total hours to catch one legal largemouth bass at Patoka Lake tournaments.

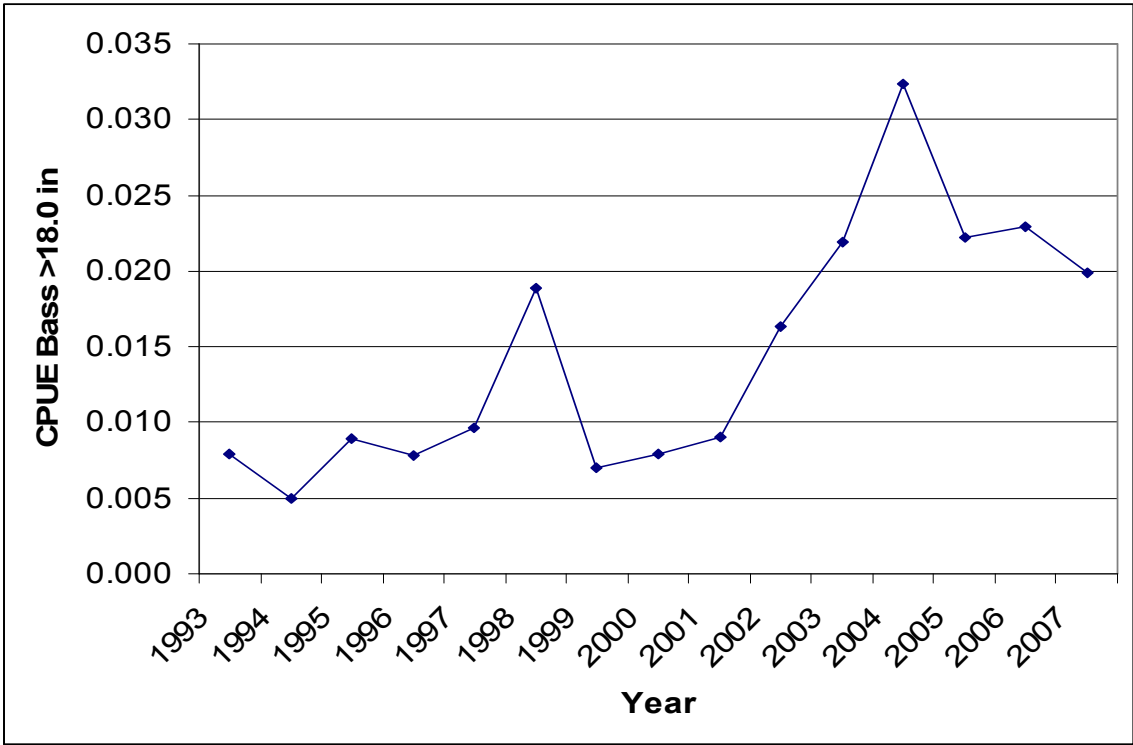


Figure 9. CPUE (#/h) of largemouth bass ≥ 18 inches weighed-in at Patoka Lake tournaments.

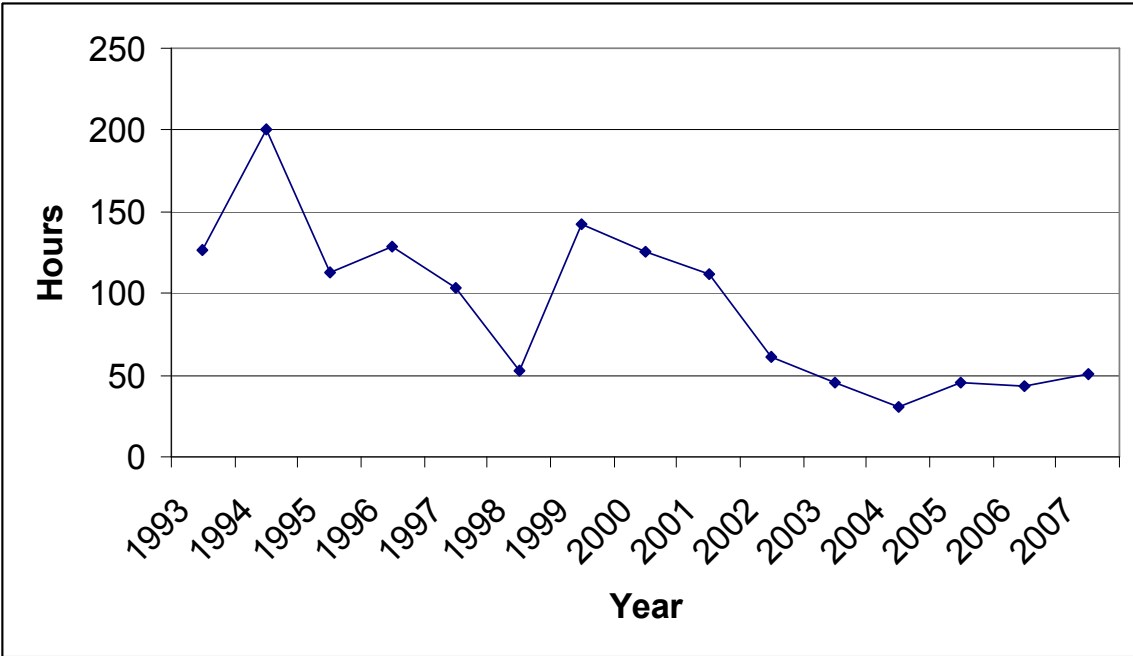


Figure 10. Total hours to catch one largemouth bass ≥ 18 inches in Patoka Lake tournaments.